

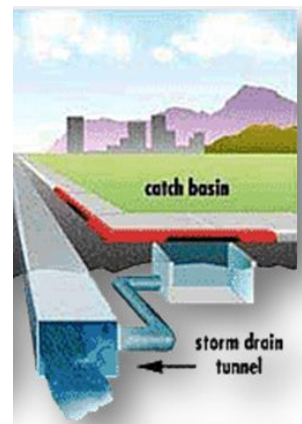
# Illicit Discharge Information



## What is illicit discharge?

Discharge to any part of the city's storm sewer system (roads, catch basins, curbs, ditches, etc.) that is not composed entirely of stormwater is considered **illicit discharge**.

Illicit discharge that enters the storm sewer system contaminates stormwater and flows directly to nearby water bodies, degrading water quality and harming local flora and fauna.



## Common Pollutants

- Soil, dirt, and sediment
- Paints and solvents
- Pesticides and herbicides
- Fertilizers
- Detergents
- Plaster
- Concrete compounds
- Asphalt compounds
- Petroleum products (fuel, oil, grease)
- Hazardous chemicals (acids, lime, glue, adhesive, curing compounds)

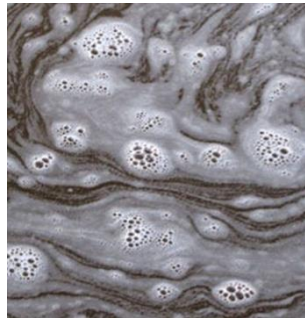
# Illicit Discharge Information



Be on the lookout for these common illicit discharges!



*Oily Sheen*



*Foam, Froth, Film*



*Grass Clippings*



*Paint Residue*



*Contractor Waste*



*Salt*



*Cleaning Waste*



*Pet Waste*



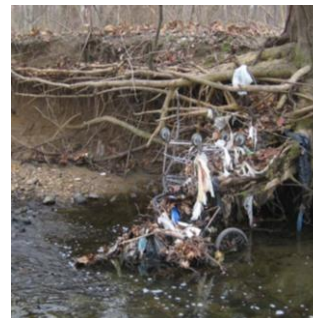
*Construction Site Runoff*



*Dumpster Compactor Leaks*



*Grease Container Leaks*



*Garbage*