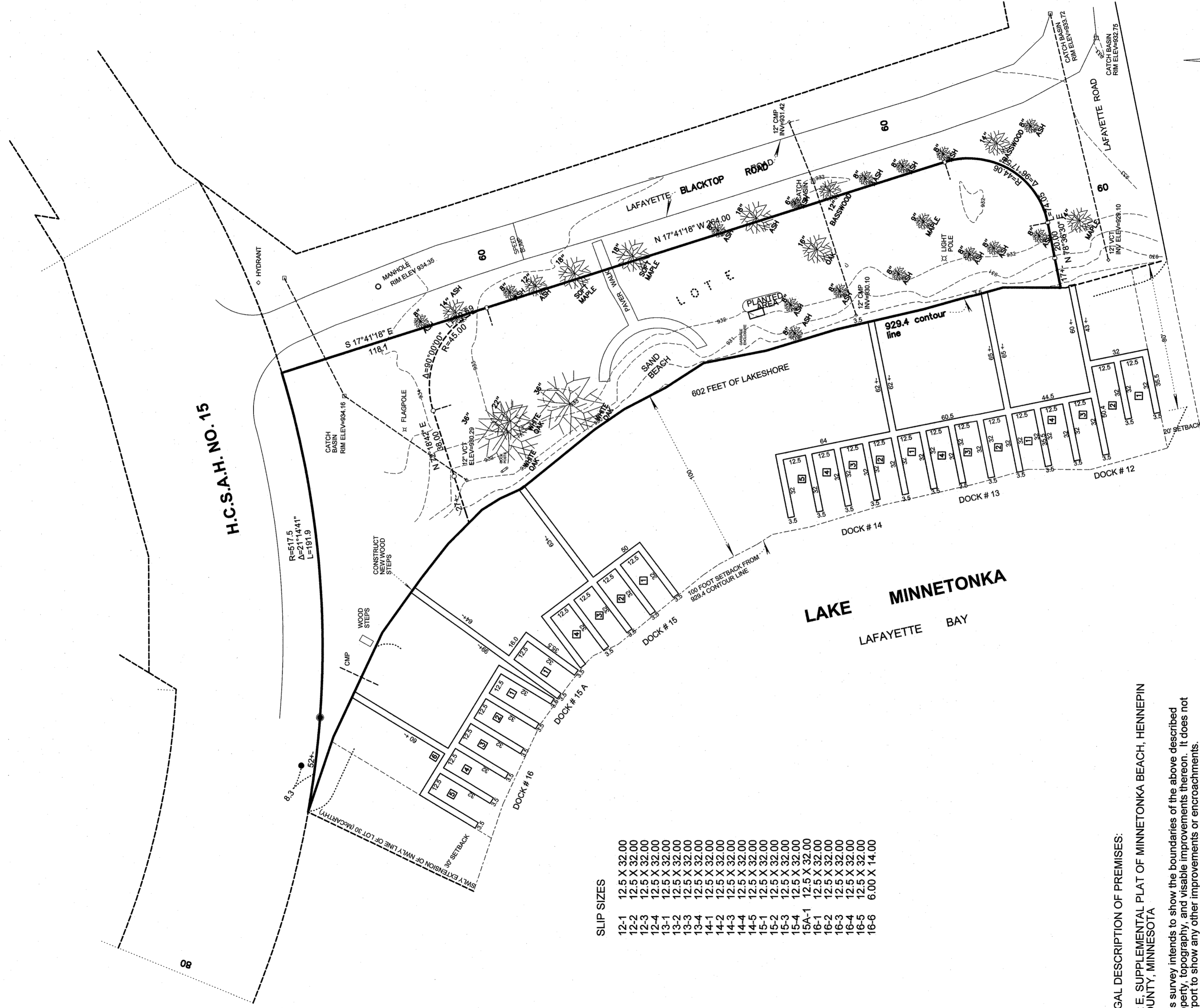


**BOUNDARY AND TOPOGRAPHIC SURVEY FOR  
THE CITY OF THE VILLAGE OF MINNETONKA BEACH  
OF LOT E, SUPPLEMENTAL PLAT OF MINNETONKA BEACH  
HENNEPIN COUNTY, MINNESOTA  
DOCK SITES 12 - 16**



**SLIP SIZES**

- 12-1 12.5 X 32.00
- 12-2 12.5 X 32.00
- 12-3 12.5 X 32.00
- 12-4 12.5 X 32.00
- 13-1 12.5 X 32.00
- 13-2 12.5 X 32.00
- 13-3 12.5 X 32.00
- 13-4 12.5 X 32.00
- 14-1 12.5 X 32.00
- 14-2 12.5 X 32.00
- 14-3 12.5 X 32.00
- 14-4 12.5 X 32.00
- 14-5 12.5 X 32.00
- 15-1 12.5 X 32.00
- 15-2 12.5 X 32.00
- 15-3 12.5 X 32.00
- 15-4 12.5 X 32.00
- 15A-1 12.5 X 32.00
- 16-1 12.5 X 32.00
- 16-2 12.5 X 32.00
- 16-3 12.5 X 32.00
- 16-4 12.5 X 32.00
- 16-5 12.5 X 32.00
- 16-6 6.00 X 14.00

**LEGAL DESCRIPTION OF PREMISES:**

Lot E, SUPPLEMENTAL PLAT OF MINNETONKA BEACH, HENNEPIN COUNTY, MINNESOTA

This survey intends to show the boundaries of the above described property, topography, and visible improvements thereon. It does not purport to show any other improvements or encroachments.

- : Denotes iron marker
- : Denotes existing contour line

Bearings are based on an assumed datum.

**REVISIONS**

DATE	REVISIONS
3-22-19	REVISIONS TO DOCK 15A AND 16
2-21-25	RELOCATED SLIP TO ARCOLA DOCKS

**DESIGNER**

I hereby certify that this plan, specification, or report was prepared by me or under my direct supervision and that I am a duly Licensed Land Surveyor under the laws of the State of Minnesota.

*Paul J. Bredberg*  
DATE: 2-21-25 MINN. LICENSE NUMBER: 127557

**DRAWN**

**CHECKED**

12-2-09

SCALE: 1"=40'

25-046



SCALE IN FEET

**GRONBERG & ASSOCIATES, INC.**  
CIVIL ENGINEERS, LAND SURVEYORS, LAND PLANNERS  
445 N. WILLOW DRIVE LONG LAKE, MN 55356  
PHONE: 952-473-4141 FAX: 952-473-4435